

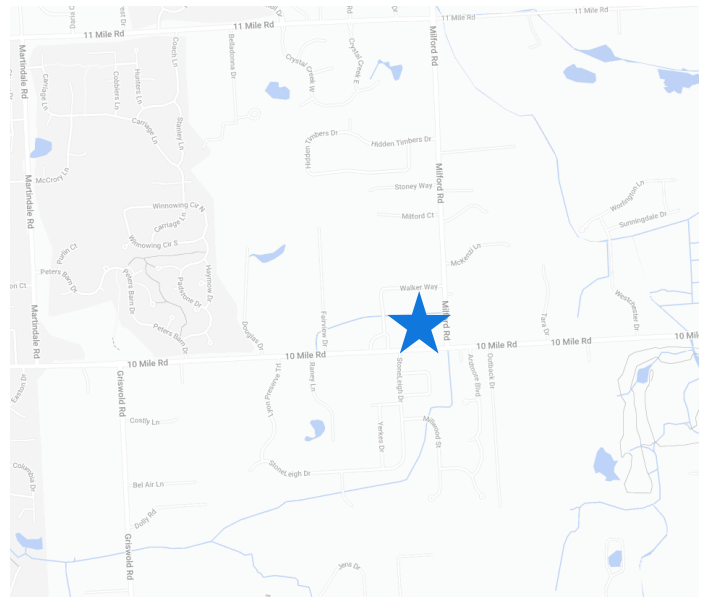


SHOPPES OF LYON

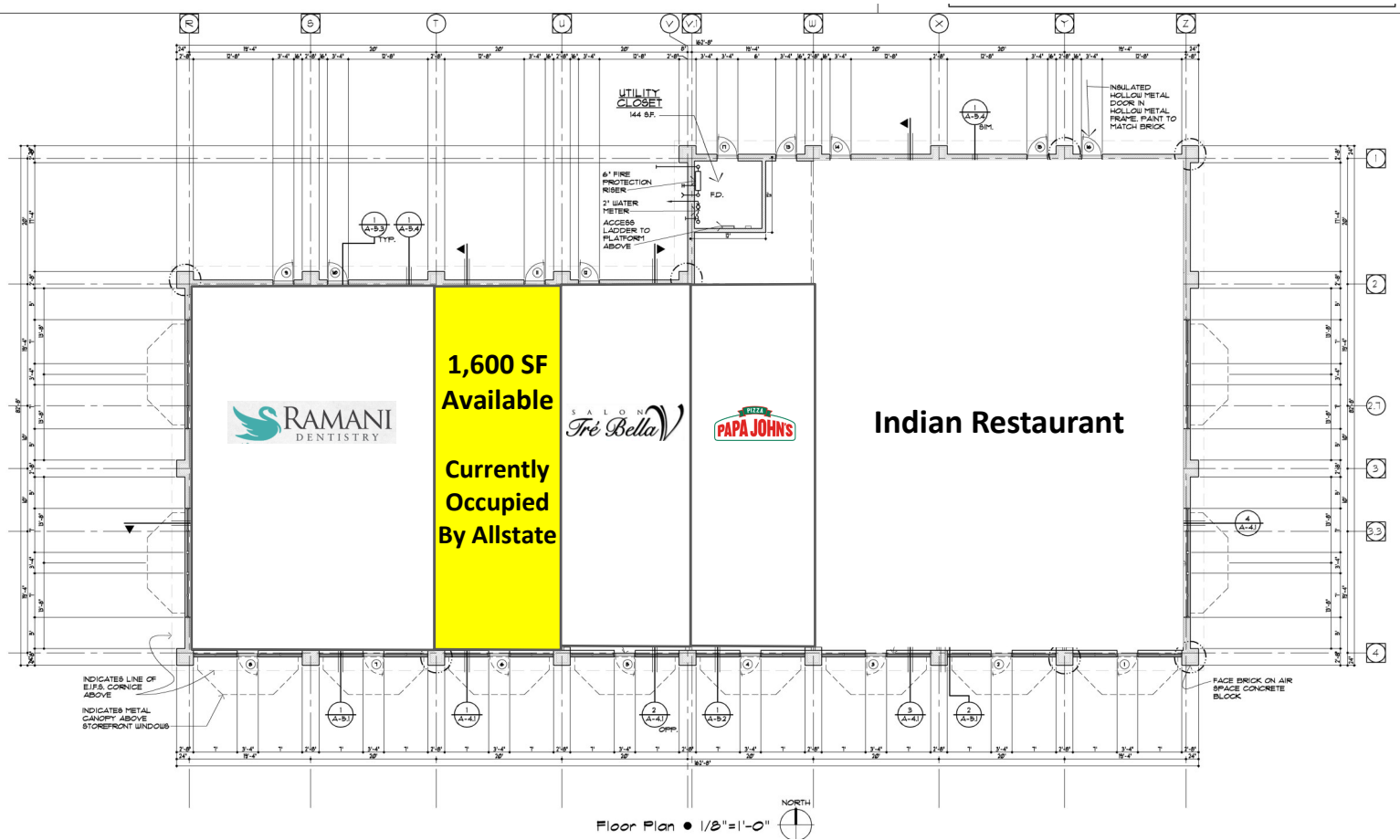
South Lyon, MI 48180

PROPERTY DETAILS

- 1,600 Sq. Ft. Available which is Currently Occupied by Allstate Insurance
- Premier Strip Center Shadow Anchored by CVS and with a Current Tenant Lineup of Papa John's Pizza, Salon Tre Bella and Ramani Dentistry
- Located on the West Side of Milford Road North of 10 Mile Road
- Ingress and Egress off of Both Milford Road and 10 Mile Road
- Huge Residential Growth Area
- Excellent Opportunity for Retail, Office or Medical Use



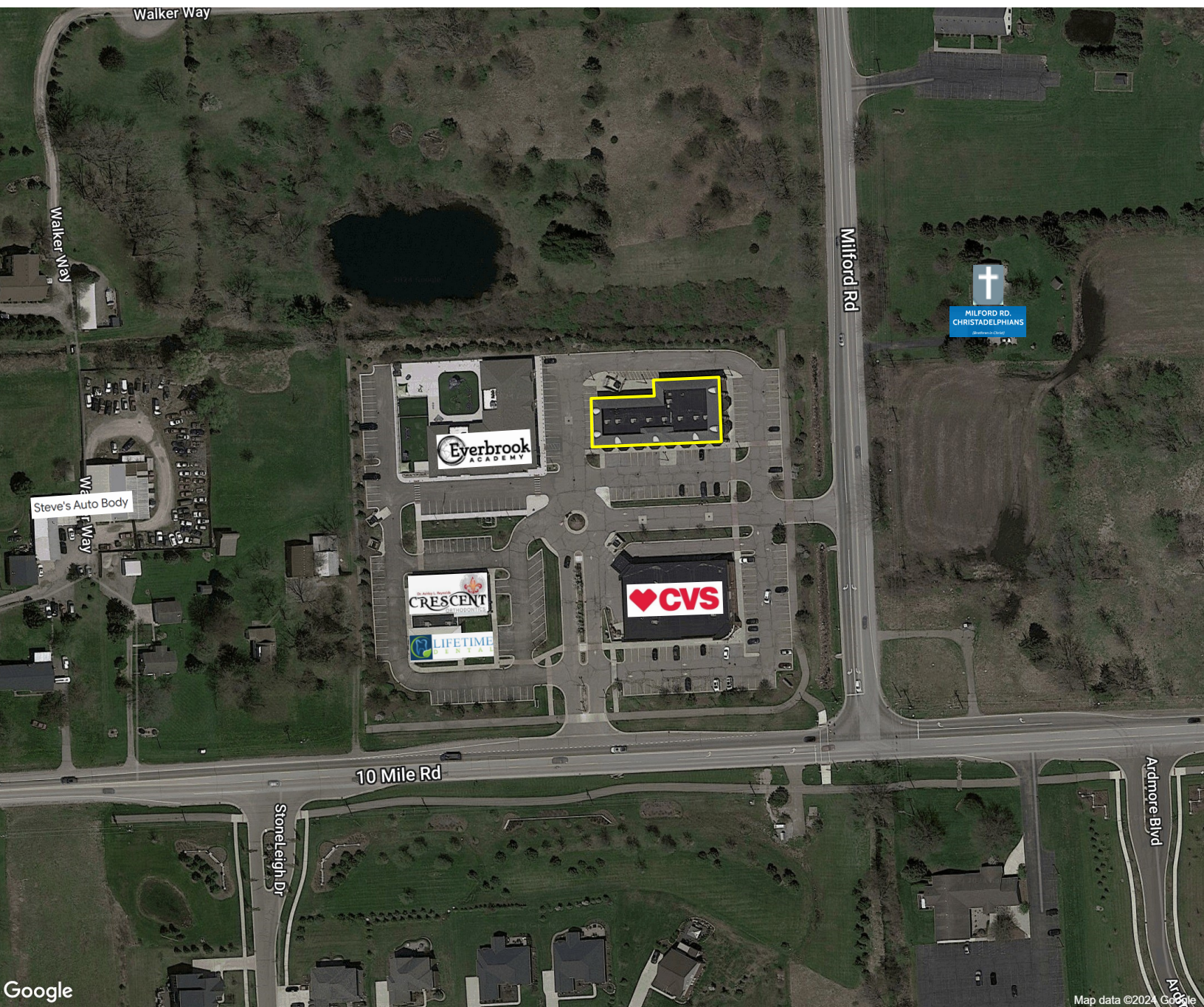
FLOOR PLAN



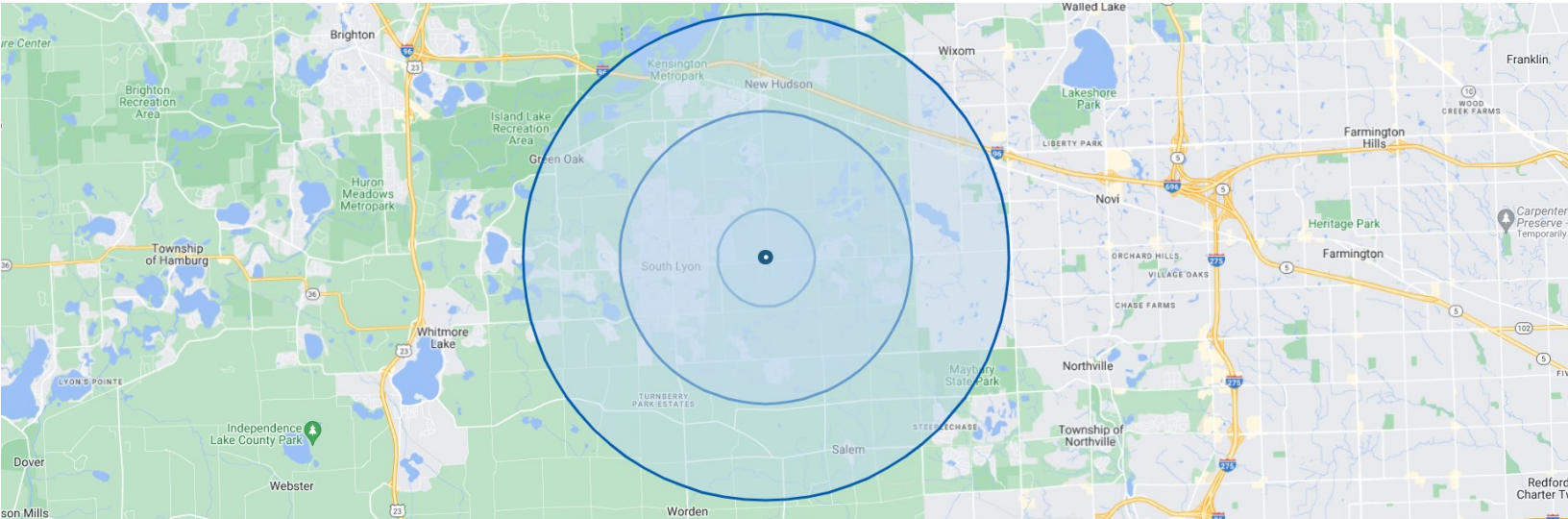
SITE PLAN



AERIAL VIEW



DEMOGRAPHIC DATA



POPULATION	1 MILE	3 MILES	5 MILES
Total Population	2,184	29,383	56,695
Median Age	41.3	41.3	41.3
Median Age (Male)	40.6	40.2	40.6
Median Age (Female)	42.0	42.0	42.3

HOUSEHOLD INCOME	1 MILE	3 MILES	5 MILES
Total Households	787	11,155	21,004
Persons Per Household	2.8	2.6	2.7
Average Household Income	\$196,858	\$145,557	\$145,022
Average Home Value	\$430,180	\$352,384	\$362,769